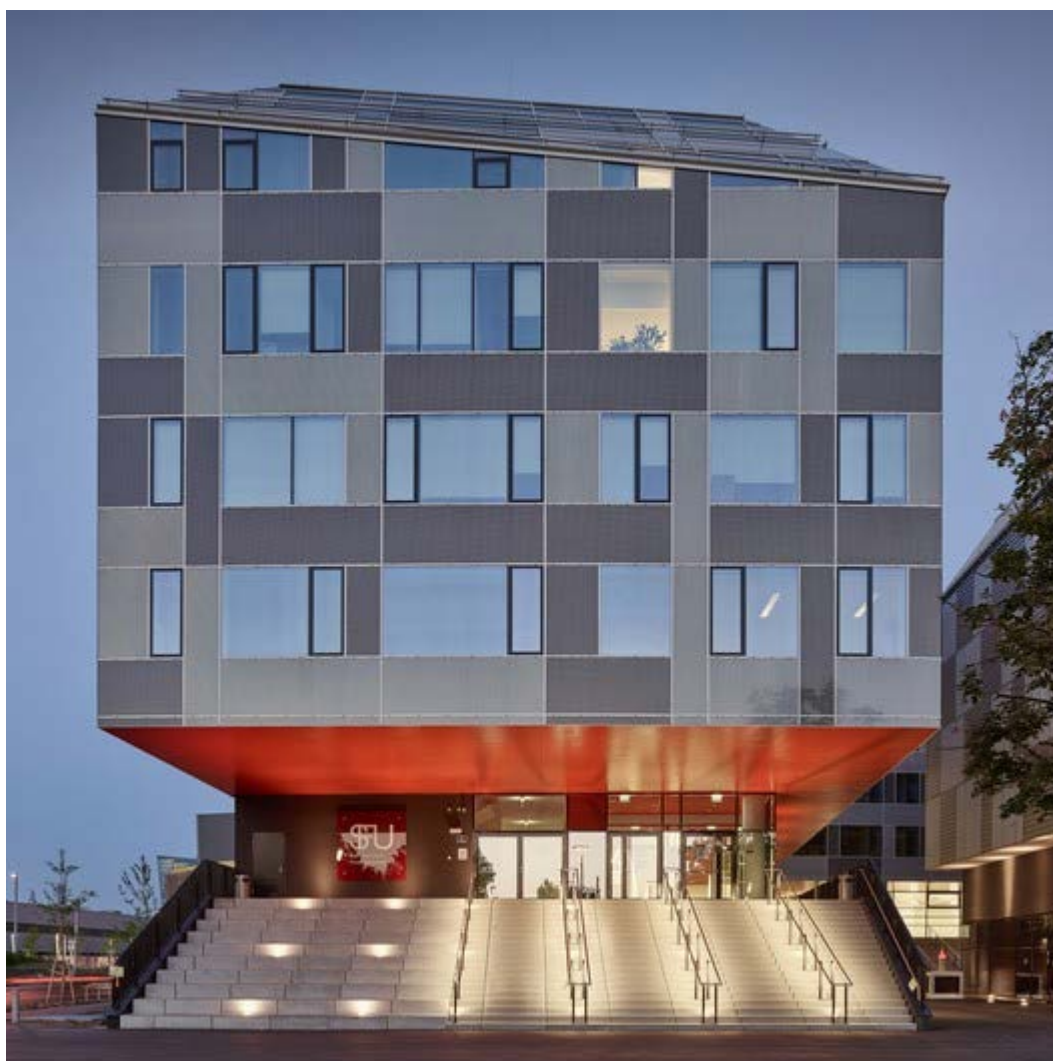




## Campus Messestrasse Vienna / Holzer Kobler Architekturen



© Kurt Hoerbst



Location: **Messestraße, 1020 Wien, Austria**

Area: **20600.0 sqm**

Project Year: **2015**

Photographs: **Kurt Hoerbst**



Collaboration: **Freimüller Söllinger Architektur**

Client / project development: **Hochschulstandort Wien Messestraße Projektentwicklung GmbH**

Landscape architecture: **Hager Partner AG**

Construction planning and implementation: **Werkstatt Grinzing**

Structural engineering / Technical equipment / construction physics: **Dr. Ronald Mischek**

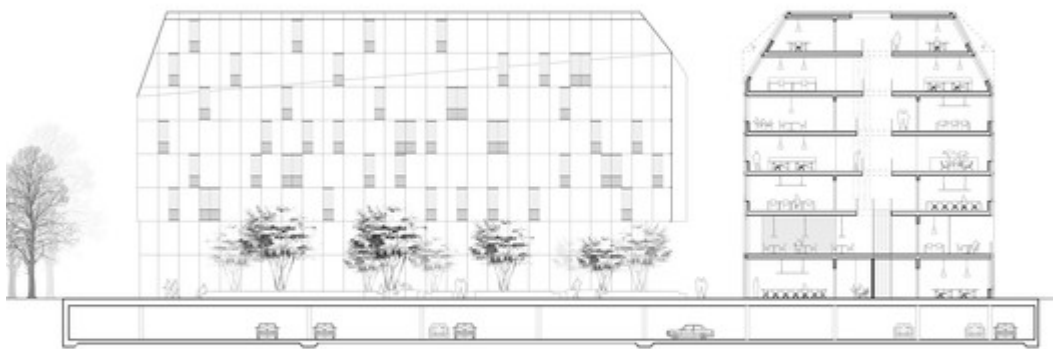
Fire prevention planning: **DI Erich Röhler**



*From the architect.* Campus Messestrasse is fast becoming an exciting part of a lively and up and coming area of Vienna between Prater and the Danube. The new university hub of the Sigmund Freud University Vienna – Paris (SFU) and a boardinghouse complete the urban space formed by the neighbouring campus of Vienna's Economics and Business University.



The campus is comprised of three buildings with different uses forming a logical whole through their geometry but at the same time standing independently in terms of design and function. Their sculptural character is accentuated through a homogeneously materialised building envelope. The ensemble creates urban spaces by increasing the building density and unifies a clear, functional structure with an unusual and simultaneously timeless form language.

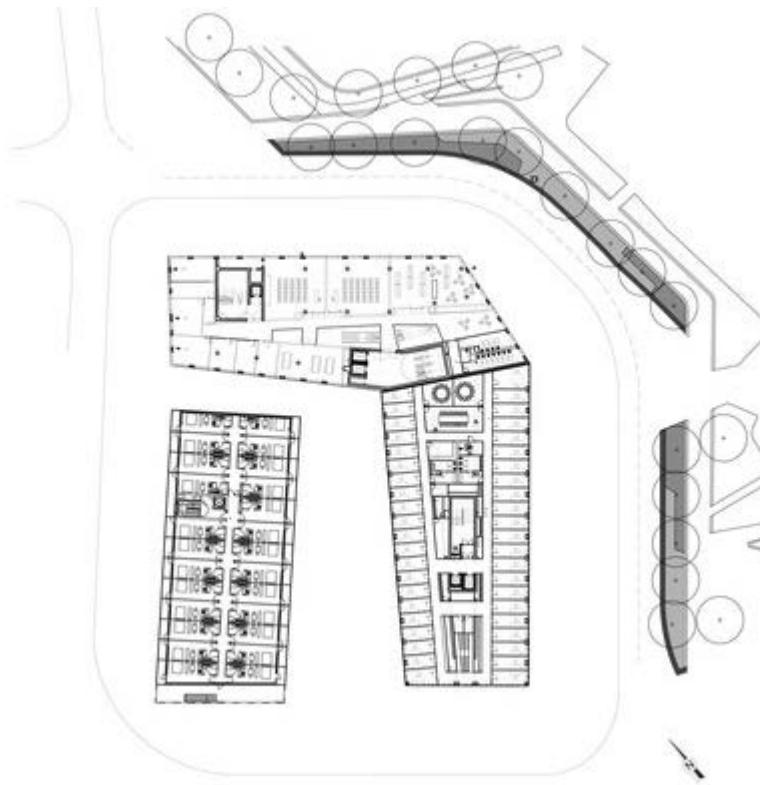


Section

The inner court formed by the composition and deformation of the building volumes holds special potential for accommodating uses of many different kinds. With the Prater, the green lung of Vienna, in sight the South-facing courtyard of the new campus acts as an urban » salon «.



© Kurt Hoerbst



Floor Plan



© Kurt Hoerbst



© Kurt Hoerbst



© Kurt Hoerbst



© Kurt Hoerbst



© Kurt Hoerbst



© Kurt Hoerbst



© Kurt Hoerbst



© Kurt Hoerbst



© Kurt Hoerbst



© Kurt Hoerbst



© Kurt Hoerbst



© Kurt Hoerbst



© Kurt Hoerbst



© Kurt Hoerbst



© Kurt Hoerbst



© Kurt Hoerbst



© Kurt Hoerbst



© Kurt Hoerbst



© Kurt Hoerbst



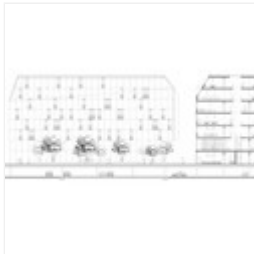
© Kurt Hoerbst



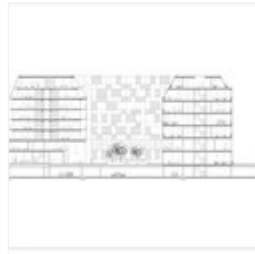
Floor Plan



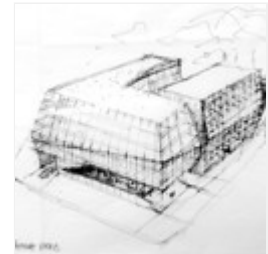
Floor Plan



Section



Section



Sketch



Location to be used only as a reference. It could indicate city/country but not exact address.

### Cite:

"Campus Messestrasse Vienna / Holzer Kobler Architekturen" 16 Aug 2015. [ArchDaily](http://www.archdaily.com/771850/campus-messestrasse-vienna-holzer-kobler-architekturen/). Accessed 18 Aug 2015.  
<<http://www.archdaily.com/771850/campus-messestrasse-vienna-holzer-kobler-architekturen/>>